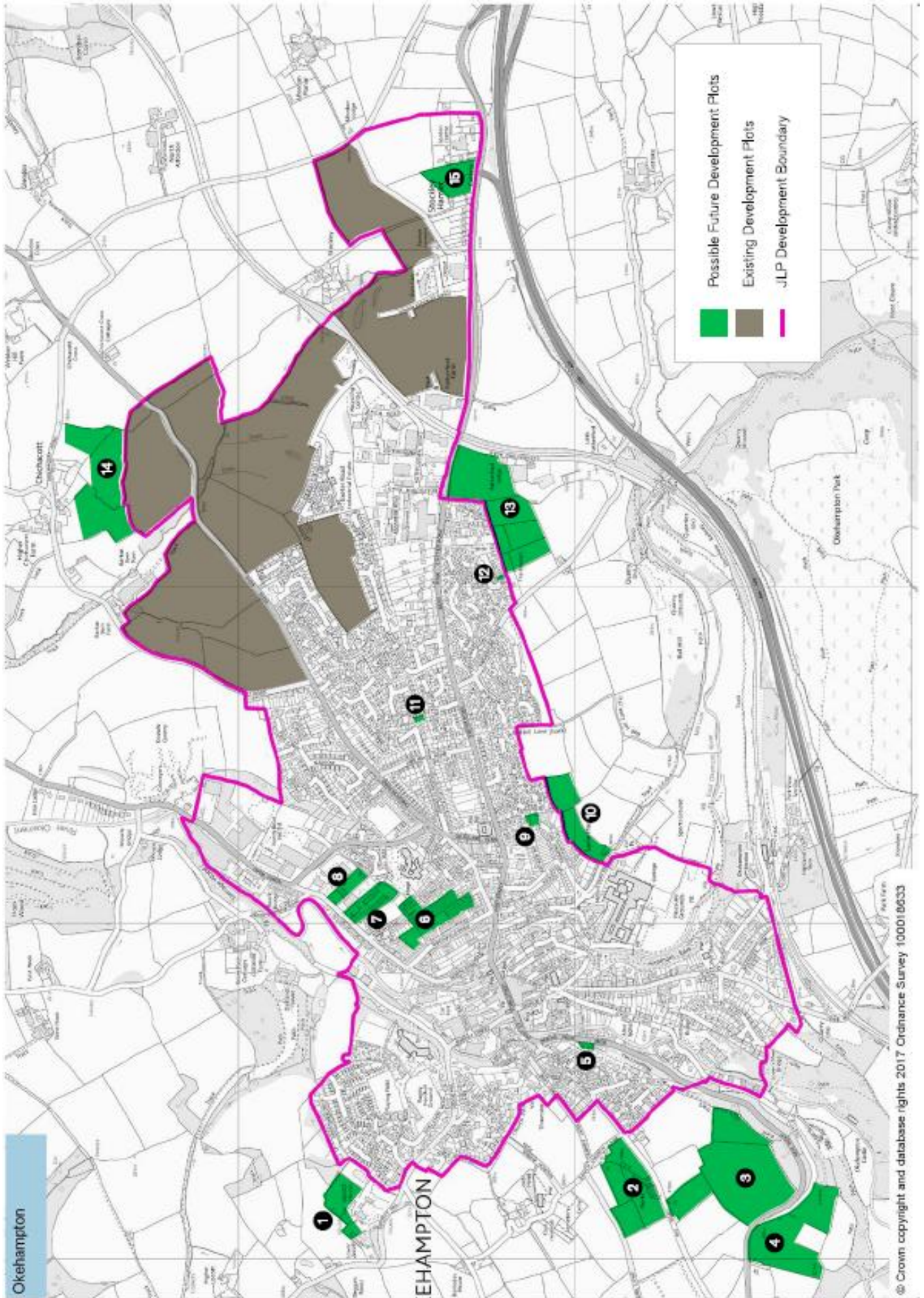


Land Use Consultation Results and Comments

November 2017

Cllr A. F. Leech

Proposed Green Spaces Map



Analysis of Box Votes

Land use consultation results November 2017:

Three events were held and information was sent out to 1700 households to get the views of the general public to see what the parcels of land that had been put forward for development buy local landowners should be used for in the future.

The four main options were for either Housing Developments, Employment Development, kept as Green Fields or for Sports and Recreation.

From the responses overall:

The highest amounts of votes were for keeping sites as Green Fields.

The second highest amount of votes was for Housing Developments.

The next was for Sports and Recreation.

The last was for Employment Land.

However, the highest amount of votes for the individual sites came out as follows: Note: some of the votes were very close, so they have been shown as mixed developments.

Plot 1.	Housing
Plot 2.	Green Space
Plot 3.	Green Space.
Plot 4.	Green Space.
Plot 5.	Housing
Plot 6.	Sports and Recreation
Plot 7.	Mixed development
Plot 8.	Housing
Plot 9.	Green space
Plot 10.	Green Space
Plot 11.	Green Space.
Plot 12.	Green Space.
Plot 13.	Green Space.
Plot 14.	Green Space.
Plot 15.	Mixed Development.

Within the questions asked was, “where should development take place?” The options were:

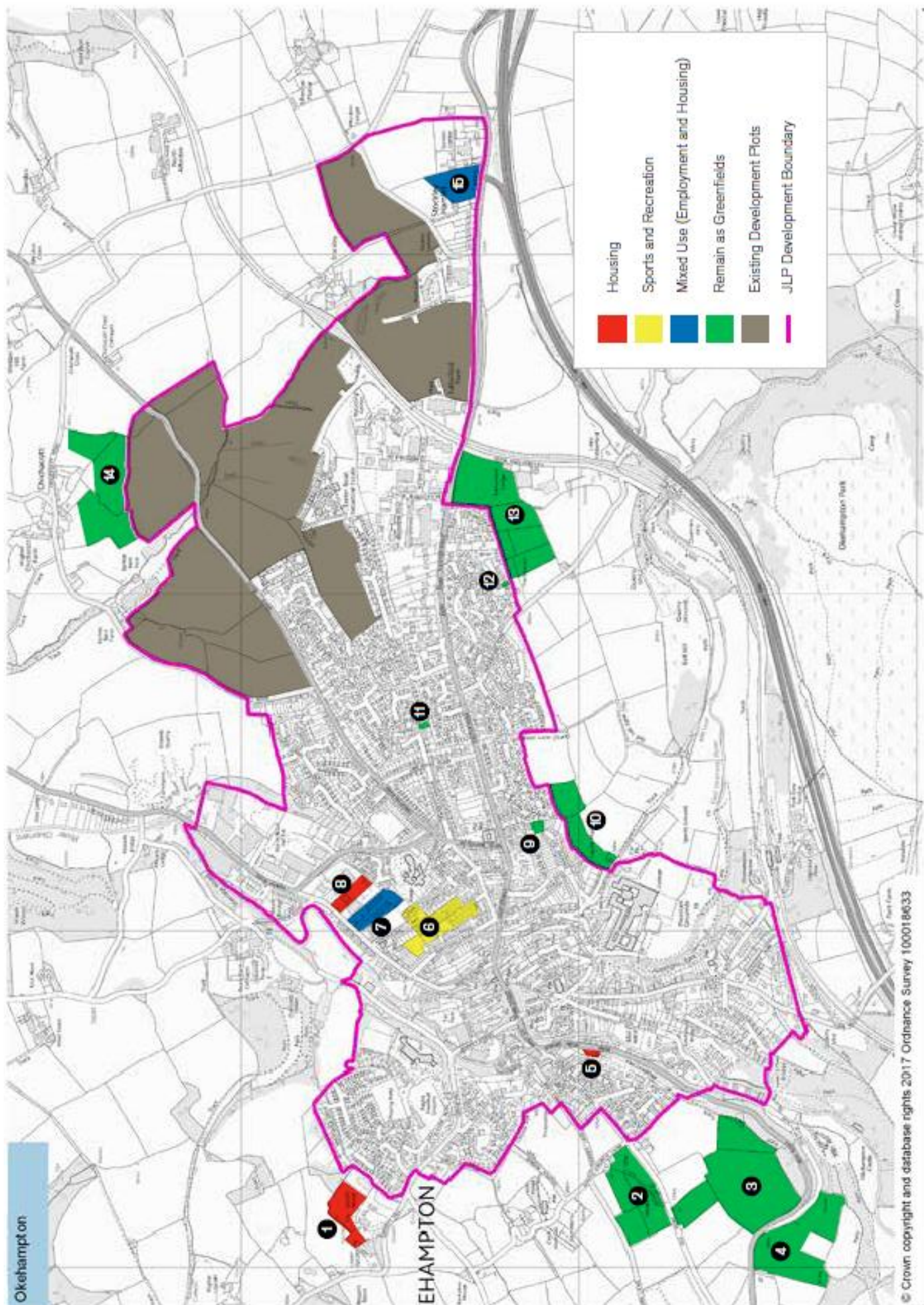
Brownfield Sites, Greenfield Sites, Out of Town or Closer to Town. The results show that the majority of the responses wanted:

Brownfield sites to be developed first and to be closer to the Town.

Out of Town sites came third.

Developments on Greenfield Sites came last of all.

Map showing Results according to Plot N°



Additional comments made by participants

**We had sixteen comments cards and they covered the following subjects:
Once the JLP developments have been completed only Brownfield sites to be used in the future, and all within the settlement boundary.**

Need keep local hospital.

Need to press for Inner relief road for the town.

Need to press for the railway line to be reopened and a station closer to the town.

Note that Lopes Crescent does not go through to Wonnacott, and drivers constantly think that it does.

Need a new Coach park.

A new by-pass for the town centre.

Better car parking, and more off road parking on the new developments.

Help to promote business coming to town.

Must keep green corridor along the Stockley Hamlets stream.

More recreational areas for young and tourists alike.

Need more Doctors, Dentists before building anymore houses.

Need new schools, primary and secondary.

More busses to outlying areas.

New developments to include shops for the new residents.